



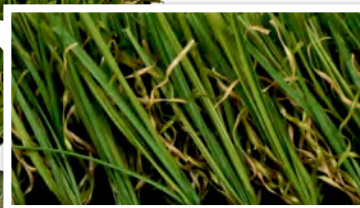
# SOFTLAWN

## FRESH ZOYSIA PLUS



Lawn &  
Landscape

Reinforced with **ChargeGuard**



### PROPERTY

**Primary/Stalk Yarn Polymer:**

**Secondary/Thatch Yarn Polymer:**

**Yarn Cross Section:**

**Primary Yarn Standard Color(s):**

**UV Stabilized:**

**Fabric Construction:**

**Primary Backing:**

**Coating Type(s):**

**Perforations:**

**Pile Height:**

**Total Weight:**

**Roll Width:**

**Yarn Shape:**

### DESCRIPTION

Polyethylene

Polypropylene

Polyethylene Omega/S Monofilament with  
Texturized Polypropylene Tatch

Field and Olive

Yes

Tufted

ArmorLoc™ 3L PP/ PET

SilverBack™ Polyurethane

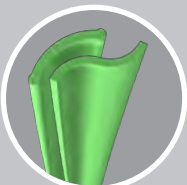
Optional

1 1/2"

79 oz/yd<sup>2</sup>

15 Ft.

Omega-S



### ADVANTAGES

- Requires no water
- Virtually maintenance-free
- Fresh cut appearance
- Needs no chemicals or fertilizer
- Never needs mowing or insecticides
- Clean and can be cleaned - Unlike mulch and shredded rubber
- ADA/ABA compliant - Crutches won't sink in and wheelchairs roll
- Safety - No more buried glass or other harmful objects
- Lead Free
- Provides excellent drainage
- Recyclable components
- Does not support stain or odor causing bacteria, mold or mildew

# SOFTLAWN

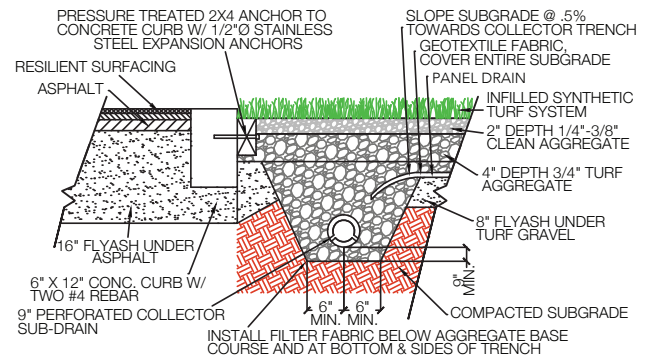
## FRESH ZOYSIA PLUS

### BENEFITS

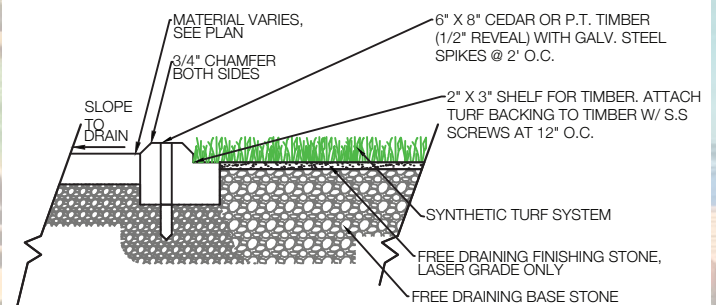
Fresh Zoysia Plus is constructed to accommodate high traffic areas with the appearance of a well-manicured beautiful natural lawn.

Reinforced with

**Charge Guard**



### CURB



### NAILER BOARD

It is the policy of Synthetic Turf International to continuously improve their line of products. Therefore, Synthetic Turf International reserves the right to change, modify or discontinue systems, specifications and accessories of all products at any time without notice or obligation to purchaser. These are standard specifications subject to manufacturing tolerances and consumer requests.