



# SOFTLAWN

## EZ PLAY COLORS



### Playground Surfaces

#### PROPERTY

**Primary/Stalk Yarn Polymer:**

**Secondary/Thatch Yarn Polymer:**

**Primary Yarn Standard Color(s):**

**Secondary Yarn Standard Color(s):**

**UV Stabilized:**

**Fabric Construction:**

**Primary Backing:**

**Coating Type(s):**

**Perforations:**

**Pile Height:**

**Face Weight:**

**Total Weight:**

**Permeability:**

**Roll Width:**

**Yarn Shape:**

#### DESCRIPTION

Polyethylene

Polypropylene

Yellow, Red, Orange, Florida Blue, Black, White, Navy/Black

Yellow, Red, Orange, Florida Blue, Black, White, Navy/Black

Yes

Tufted

ArmorLoc™ 3L Stabilized Woven PP/ PET Multilayer

SilverBack™ Polyurethane

Optional

1-1/4"

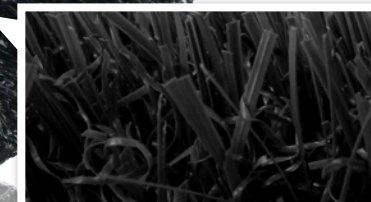
60 oz/yd<sup>2</sup>

87 oz/yd<sup>2</sup>

Minimum 30" per hour when perforated

15 Ft.

Diamond



- IPEMA Certified Safety Surface Systems
- Soft and safe for kids with fall zone safety ratings to 12'
- ADA/ABA accessible play surfaces
- Virtually maintenance free
- Lush natural look and fresh cut appearance
- Eliminates grass and other environmental allergies
- No need for harmful chemicals, fertilizers, or pesticides
- Clean and can be cleaned unlike other alternatives
- Consistent performance over long periods of time and use
- Consistent performance over time and use
- Promotes sensory development

#### Standard Line and Field Colors\*



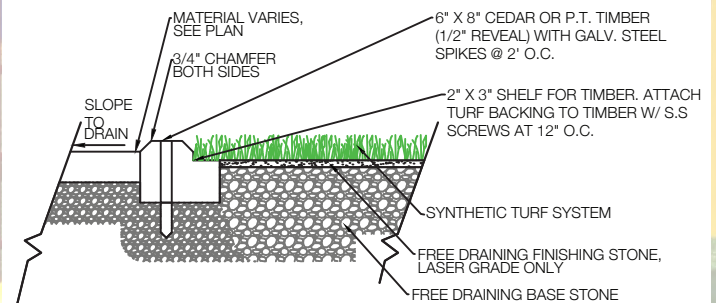
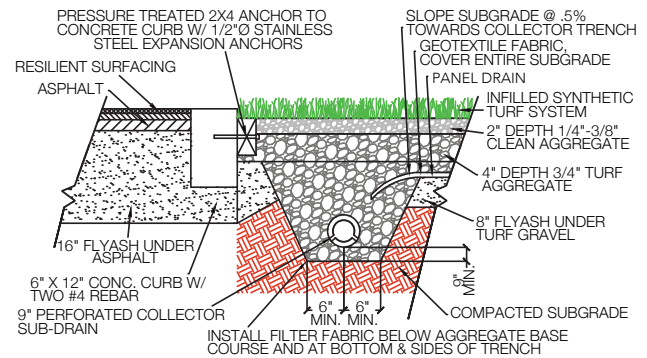
\*Custom colors available upon request

# SOFTLAWN

## EZ PLAY COLORS

## BENEFITS

This is a signature playground product with a thatch layer for added body, reducing the amount of infill required. The four color blend of this surface provides an authentic look and feel that resembles a natural lawn. This product can also be used for landscapes, pet facilities and golf fringes.



It is the policy of Synthetic Turf International to continuously improve their line of products. Therefore, Synthetic Turf International reserves the right to change, modify or discontinue systems, specifications and accessories of all products at any time without notice or obligation to purchaser. These are standard specifications subject to manufacturing tolerances and consumer requests.