

TRAINER'S CHOICE



Athletics



PROPERTY

Primary/Stalk Yarn Polymer

Secondary/Thatch Yarn Polymer

Yarn Cross Section

Standard Colors

UV Stabilized

Fabric Construction

Primary Backing

Coating Type(s)

Perforations

Recommended Infill

Pile Height

Total Weight

ISO 9001 Quality Assured

Roll Width

Blades Per Sq. Ft.

DESCRIPTION

Polyethylene

Nylon

Polyethylene Slit Film/ Texturized Nylon

Field Green; White; Red; FLA Blue; Black

Yes

Tufted

Dual Layered Woven Polypropylene

5mm Polyurethane Foam w/Fleece;
SilverBack™ Polyurethane

Custom Only

N/A

3/4"

122 oz.

Yes

12 & 15 Ft.

4224 blades/sq. ft.

ADVANTAGES

- Perfect for training
- High performance quality
- Reacts naturally
- Improved durability and safety
- Helps create multipurpose facilities
- Virtually maintenance free
- Clean and can be cleaned easily
- Consistent performance over time and use

Standard Line and Field Colors*

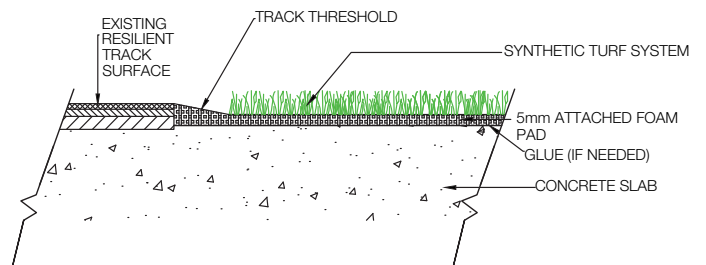
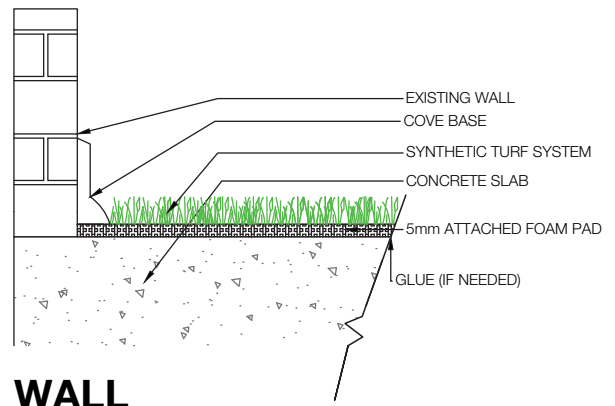


*Custom colors available upon request

TRAINER'S CHOICE

BENEFITS

This non-rubber infilled turf has all the advantages of previous generations and performs even higher in wear and resistance tests. The blend of nylon and polyethylene is an almost perfect 50/50 combination. This gives you the true ball roll of a traditional nylon field, with the softness of the new generation rubber-filled turf. No rubber infill makes maintenance easier, and up to 10% cooler. These systems can also be portable with added 4" or 8" velcro.



It is the policy of Synthetic Turf International to continuously improve their line of products. Therefore, Synthetic Turf International reserves the right to change, modify or discontinue systems, specifications and accessories of all products at any time without notice or obligation to purchaser. These are standard specifications subject to manufacturing tolerances and consumer requests.